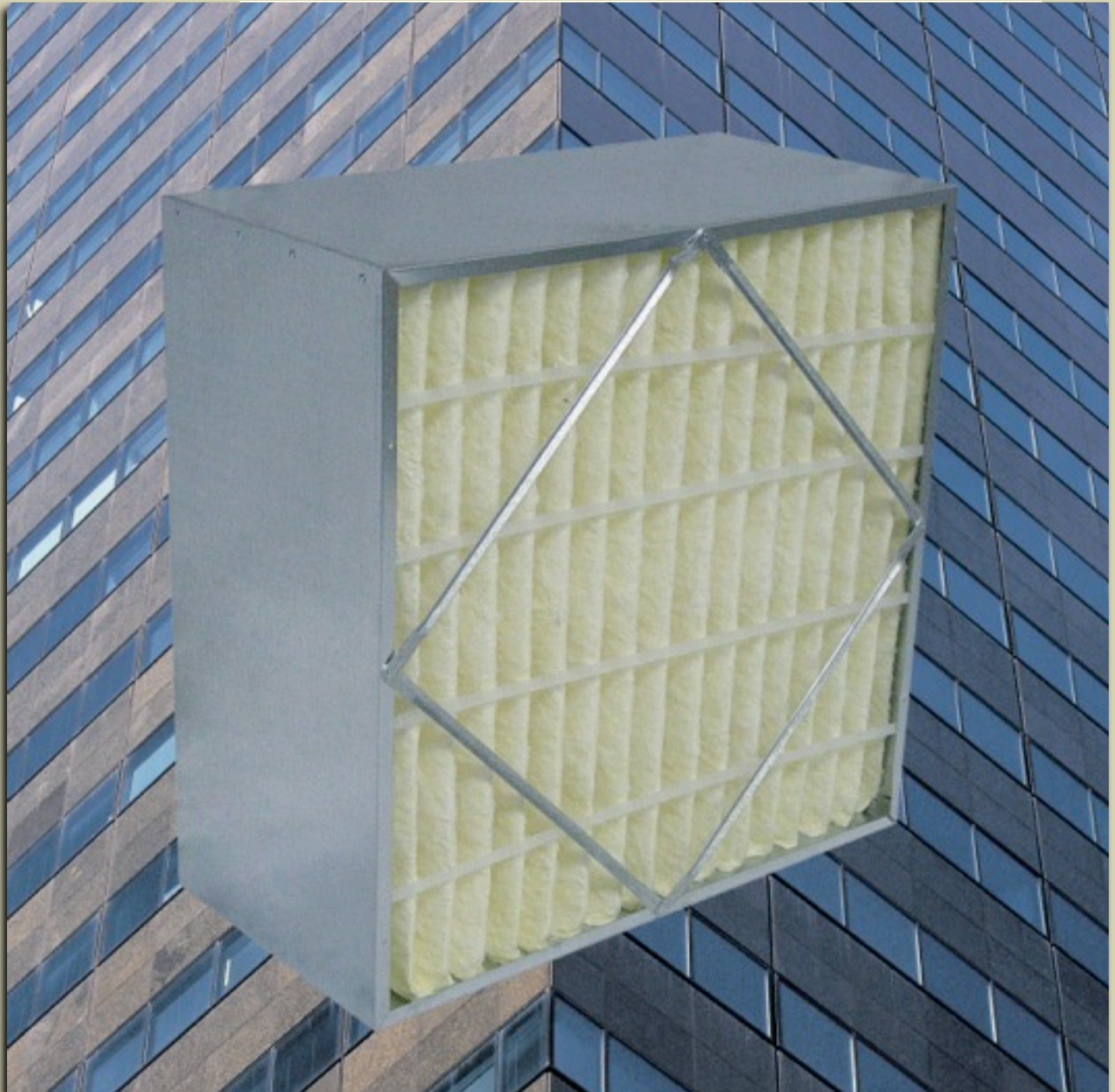
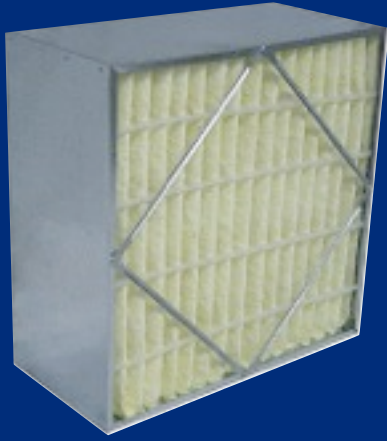


TRI DIM
FILTER CORPORATION

TRI-CELL R & SYN-PAC R

High Efficiency Rigid Filters





TRI-CELL R AND SYN-PAC R EXTENDED SURFACE RIGID FILTERS OFFER SUPERIOR PERFORMANCE, RUGGED CONSTRUCTION, AND A WIDE RANGE OF EFFICIENCIES.

TRUSTED

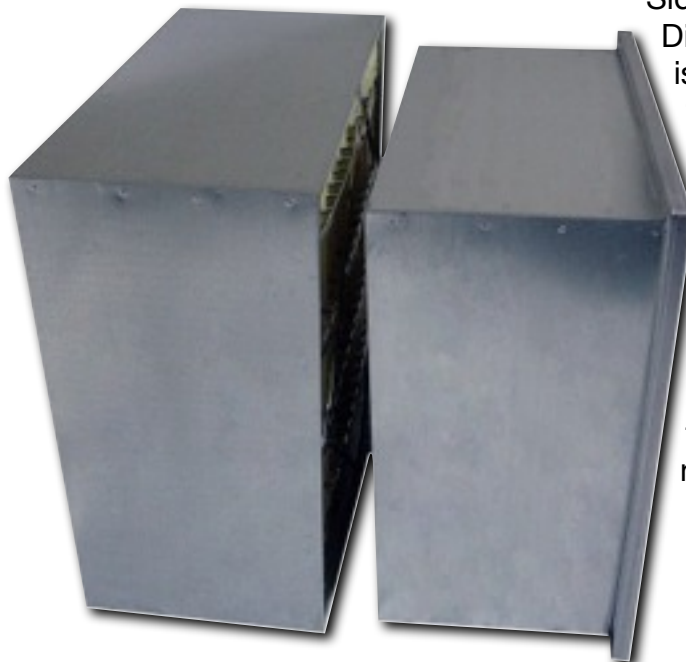
MEDIA OPTIONS - Tri-Dim's Rigid Cell family offers both fiberglass and synthetic medias. Tri-Dim's TRI-CELL R offers fiberglass media, a high loft, depth loading micro-glass media. Tri-Dim's fiberglass media offers strong mechanical filtration properties and provides proven removal efficiencies throughout the filters life.

Tri-Dim's SYN-PAC R filters feature 100% synthetic media. Tri-Dim's SYN-PAC media offers high initial efficiency, low resistance and reduced fiber shedding.



FRAME STYLES - TRI-CELL R and SYN-PAC R filters are offered in a no header 'box' style or a single header style frame – both are constructed of galvanized steel. Tri-Dim's Single Header Style frame will fit into any OEM

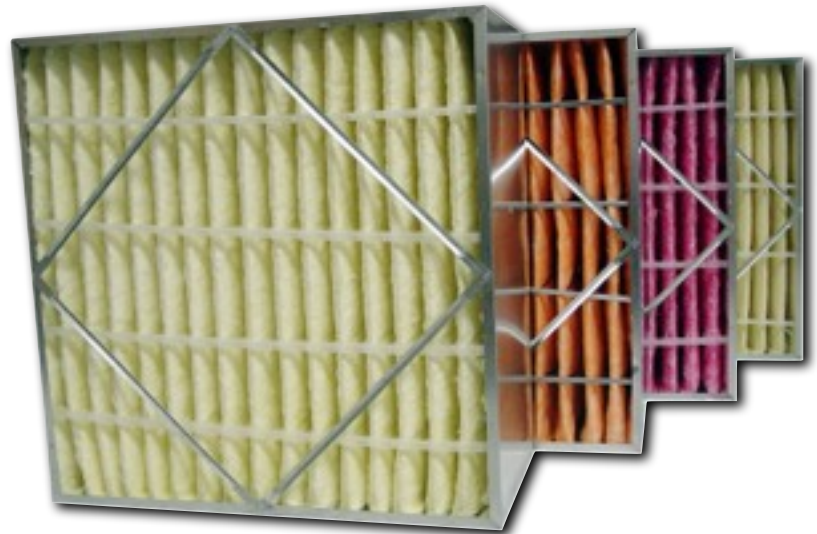
Side Access Housing. Tri-Dim's No Header 'Box' Style is designed to fit into holding frame applications that utilize spring clips – both the TRI-CELL R and SYN-PAC R come with holes predrilled for spring clip use.



Tri-Dim offers both the TRI-CELL R and SYN-PAC R filters in both 12" and 6" nominal depths.

EFFICIENCY OPTIONS -TRI-CELL R and SYN-PAC R filters are offered in a wide variety of ASHRAE efficiencies. Available efficiencies are 45-50% (MERV 11), 60-65% (MERV 12), 80-85% (MERV 13) and 90-95% (MERV 15).

This broad offering of efficiencies allows for use in a wide range of applications and will allow for easy efficiency upgrades when needed.



TRI-CELL R filters (l to r) 45-45%, 60-65%, 80-85% and 90-95%



Plastic, Cardboard and Metal (l to r) Finger Media Separators

FILTER CONSTRUCTION - The Tri-Dim Rigid Cell family utilizes a galvanized steel frame and cardboard or plastic finger media separators on our standard versions of the TRI-CELL R and SYN-PAC R filters. Metal finger media separators are available in the all-metal 'RM' versions, see below for more information.

The TRI-CELL R and SYN-PAC R filters utilize an expanded metal, rust resistant wire support grid that is bonded to the media for added media support.

ADDITIONAL OPTIONS:

TRI-CELL RM and SYN-PAC

RM – Both the TRI-CELL R and SYN-PAC R are offered in all metal versions featuring metal finger media separators.

GASKETING – Optional gasketing is available on both the TRI-CELL R and SYN-PAC R filter. Appropriate gasketing is recommended on all high efficiency filters to eliminate the bypass of unfiltered air.



All Metal "RM" Version

PRODUCT SPECIFICATIONS

SPECIFICATION SYN-PAC R SERIES

SPECIFICATION TRI-CELL R SERIES

MEDIA:

Lofted Synthetic

RECOMMENDED FINAL RESISTANCE:

1.5" W.G. (373 PA)

Media Area (No Header Version):

24x24x12 610x610x305	58 Sq Ft 5.4 m ²
24x12x12 610x305x305	28 Sq Ft 2.6 m ²
24x24x6 610x610x152	29 Sq Ft 2.7 m ²
24x12x6 610x305x152	14 Sq Ft 2.0 m ²

RESISTANCE:

12" Deep 90-95%	0.59" WG @ 500 FPM 147 PA @ 2.54 m/sec
6" Deep 90-95%	0.49" WG @ 250 FPM 114 PA @ 1.27 m/sec
12" Deep 80-85%	0.39" WG @ 500 FPM 97 PA @ 2.54 m/sec
6" Deep 80-85%	0.32" WG @ 250 FPM 80 PA @ 1.27 m/sec
12" Deep 60-65%	0.25" WG @ 500 FPM 62 PA @ 2.54 m/sec
6" Deep 60-65%	0.14" WG @ 250 FPM 35 PA @ 1.27 m/sec
12" Deep 45-50%	0.20" WG @ 500 FPM 50 PA @ 2.54 m/sec
6" Deep 45-50%	0.13" WG @ 250 FPM 32 PA @ 1.27 m/sec

RATED EFFICIENCY:

ASHRAE 52.1 = ASHRAE 52.2
 45-50% = MERV 11
 60-65% = MERV 12
 80-85% = MERV 13
 90-95% = MERV 15

MEDIA:

Lofted Fiberglass

RECOMMENDED FINAL RESISTANCE:

1.5" W.G. (373 PA)

Media Area (No Header Version):

24x24x12 610x610x305	58 Sq Ft 5.4 m ²
24x12x12 610x305x305	28 Sq Ft 2.6 m ²
24x24x6 610x610x152	29 Sq Ft 2.7 m ²
24x12x6 610x305x152	14 Sq Ft 1.3 m ²

RESISTANCE:

12" Deep 90-95%	0.69" WG @ 500 FPM 172 PA @ 2.54 m/sec
6" Deep 90-95%	0.67" WG @ 250 FPM 167 PA @ 1.27 m/sec
12" Deep 80-85%	0.48" WG @ 500 FPM 119 PA @ 2.54 m/sec
6" Deep 80-85%	0.40" WG @ 250 FPM 100 PA @ 1.27 m/sec
12" Deep 60-65%	0.32" WG @ 500 FPM 80 PA @ 2.54 m/sec
6" Deep 60-65%	0.22" WG @ 250 FPM 55 PA @ 1.27 m/sec
12" Deep 45-50%	0.30" WG @ 500 FPM 75 PA @ 2.54 m/sec
6" Deep 45-50%	0.19" WG @ 250 FPM 47 PA @ 1.27 m/sec

RATED EFFICIENCY:

ASHRAE 52.1 = ASHRAE 52.2
 45-50% = MERV 11
 60-65% = MERV 12
 80-85% = MERV 13
 90-95% = MERV 15

Tri-Dim Filter Corporation is committed to continual product development – all descriptions, specifications and performance data are subject to change without notice.

Tri-Dim products are manufactured to exacting criteria - there can be a ±5% variance in filter performance. Tri-Dim® and Tri-Dek® are Registered Trademarks of Tri-Dim Filter Corporation.



TRI-DIM FILTER CORPORATION
 P.O. BOX 466 • 93 INDUSTRIAL DRIVE
 LOUISA, VA 23093
 (540) 967-2600 • FAX: (540) 967-2835
 EMAIL: info@tridim.com • Website: www.tridim.com
 TOLL FREE 1-800-458-9835



Local Representation:

Brochure #1500-1
Revision: 10/2012



PLEASE RECYCLE - This paper may not be recyclable in your area if facilities do not exist. This brochure is printed on paper that is certified by the Sustainable Forestry Initiative (SFI) - for more information go to www.sfi.org.

