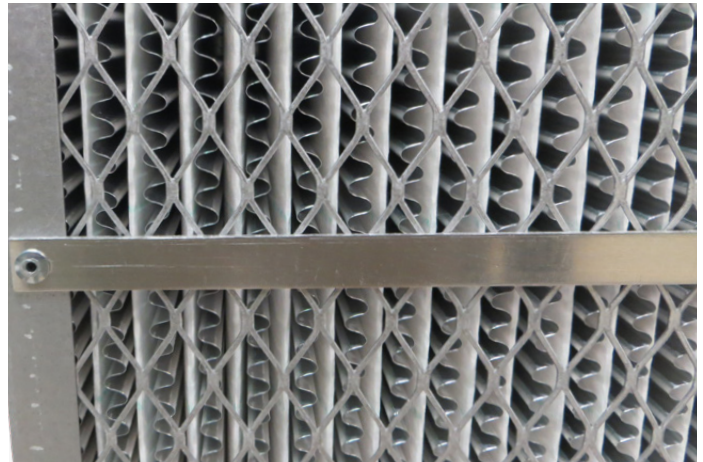
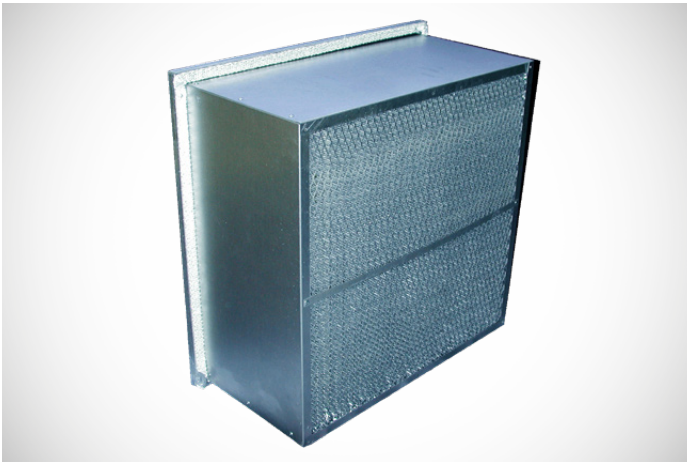


Tri-Cell™ HT

Medium & High Efficiency, High Temperature Filtration



Tri-Cell HT's cross brace and faceguard

DESIGNED FOR THE HARSHTEST OF ENVIRONMENTS

Tri-Cell HT (high temperature) filters are designed for applications that demand high efficiency in a high temperature environment – such as automotive finishing ovens. Tri-Cell HT is engineered and manufactured to handle the demands of these extreme environments of up to 900 °F.

Tri-Cell HT is available in MERV 11 (60-65%) and MERV 14 (90-95%) efficiencies and in either single header (see photo above left) or double header configurations. Tri-Cell HT is constructed with protective faceguards both upstream and downstream and a cross brace located downstream. Tri-Cell HT is available in three different versions - 500 °F, 750 °F and 900 °F to meet the demands of a wide variety of applications.

The media is constructed of glass microfibers that are configured to maximize service life. The Tri-Cell HT media is water resistant and features aluminum separators that have been rolled and tapered and placed between each pleat to enhance stability and to insure maximum airflow at a minimal resistance. Tri-Cell HT utilizes a high temperature rope gasket with a frame constructed from 22-gauge aluminized steel frame.

Tri-Cell HT is the filter to use in demanding, high temperature environments.

Tri-Cell™ HT

Technical specification

SPECIFICATIONS

Product	Tri-Cell™ HT
Media	Glass microfiber
Frame	Aluminized steel
Faceguards	Upstream and downstream (standard)
Cross Brace	Downstream (standard)
Efficiency and Initial Resistance @ 500 FPM (2.54 m/sec) MERV 11 (60 - 65%) 500 °F MERV 11 (60 - 65%) 750 °F MERV 11 (60 - 65%) 900 °F MERV 14 (90 - 95%) 500 °F MERV 14 (90 - 95%) 750 °F MERV 14 (90 - 95%) 900 °F	0.40 "W.G. (100 Pa) 0.42 "W.G. (105 Pa) 0.45 "W.G. (112 Pa) 0.65 "W.G. (162 Pa) 0.66 "W.G. (164 Pa) 0.66 "W.G. (164 Pa)
Recommended Final Resistance	1.5 "W.G. (373 PA)
Gasketing	Factory installed, high temperature rope gasketing

Meets ANSI/UL-900 requirements

LOCAL REPRESENTATIVE

Tri-Dim Filter Corporation is committed to continual product development - all descriptions, specifications and performance data are subject to change without notice. Tri-Dim products are manufactured to exacting criteria - there can be a ±5% variance in filter performance.