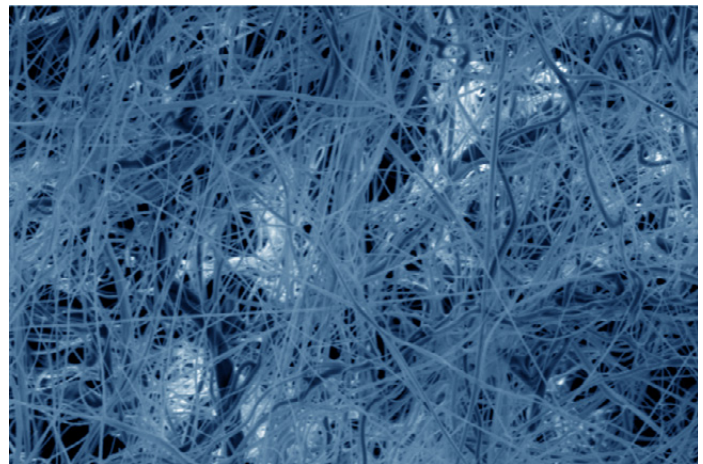
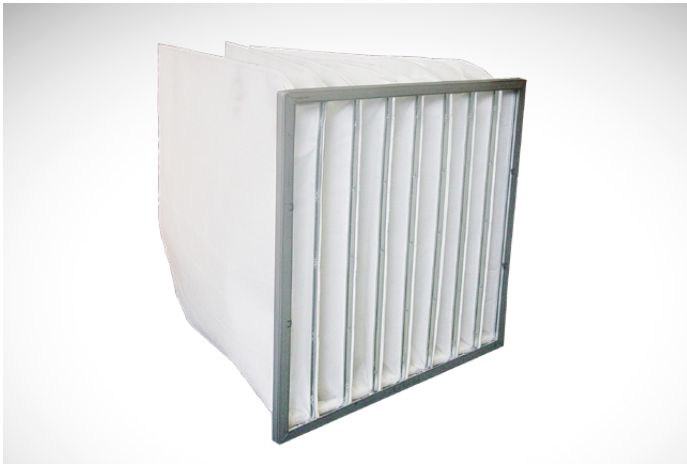


Ultra XP
Ultra High
Efficiency Bag
Filter

Ultra XP

Unmatched performance



ULTRA XP - SIMPLY THE BEST IN CLASS

The Ultra XP extended surface bag filter delivers superior performance - combining high efficiency with a low pressure drop.

ULTRA MEDIA

The Ultra XP utilizes the tough, durable Ultra Media - now available in an extended surface bag filter configuration. The Ultra media has proven to be strong and durable through various field trials and a multitude of test run to confirm the Ultra medias strength.

CONSTRUCTION

The Ultra XP is constructed in a controlled environment with the highest level of quality. The pockets are sealed to provide maximum strength and aerodynamic channels inside the pockets ensure proper inflation of pockets and to maximize the media's utilization.

The pockets are secured to double turned galvanized hoops that are secured to a roll formed header. This process prevents the bypass of unfiltered air and adds rigidity. Tri-Dim's manufacturing process ensures the highest quality product.

Extended surface

Superior performance

PERFORMANCE

The efficiencies to the left show exceptional efficiency - the MERV 16+ Bag shows near HEPA performance with minimal efficiencies in the 0.3 micron range of 97.8%. A 'typical' MERV 14 (90%) Synthetic filter is included for reference.

The efficiency numbers above are misleading - the difference between the removal efficiency of 97.8% (Ultra XP MERV 16+) compared to 75.6% (typical MERV 14 synthetic) may not seem that great a difference but the difference in the number of particles that pass through the filter is astonishing.

The difference between 97.8% and 75.6% is 10 fold. If 100,000 particles that are 0.3 micron in size challenge each filter only 2,200 particles will pass through the Ultra XP MERV 16+ while a whopping 24,400 particles will pass through a 'typical' MERV 14 synthetic bag filter.

This is vitally important information for critical applications such as healthcare, pharmaceutical, etc.

OPTIONS

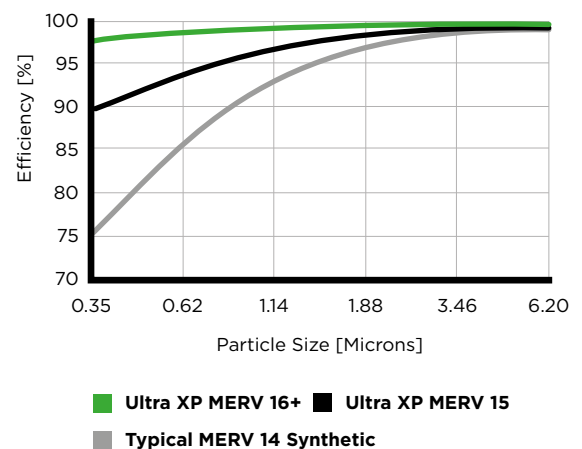
Efficiency - Ultra XP is available in three efficiencies - MERV A 14, MERV A 15 and MERV A 16.

Standard Sizes - Ultra XP Extended Surface filters are offered in 46 standard size options - including five different pocket depths, five different height and width options and six options of the number of pockets.

Custom Sizes - In addition the Ultra XP is available in virtually any combination of height, width, depth and number of pockets. There are some limitations so please consult with your local representative for availability.

PARTICLE REMOVAL COMPARISON

Efficiency at different particle sizes



Gasketing - Charcoal Ether Foam Gasketing is available on vertical sides, horizontal sides, upstream face or downstream face of header. Gasketing is a critical component to achieve the maximum efficiency performance out of the ULTRA XP or any filtration product.

Ultra XP

Technical Data

SPECIFICATIONS

Product	Ultra XP
Efficiency & resistance @ 492 FPM (2.5 m/s) MERV A 16 MERV A 15 MERV A 14	0.60 "W.G. (149 Pa) 0.40 "W.G. (100 Pa) 0.32 "W.G. (80 Pa)
Final resistance	1.50 "W.G. (373 Pa)

Product Dimensions & Type	Square Feet of Media
24 x 24 x 22" - 8 Pocket (610 x 610 x 559 mm)	58 sq. ft (5.4 m ²)
12 x 24 x 22" - 4 Pocket (305 x 610 x 559 mm)	29 sq. ft (2.7m ²)
24 x 24 x 26" - 8 Pocket (610 x 610 x 660 mm)	69 sq. ft (6.4 m ²)
12 x 24 x 26" - 4 Pocket (305 x 610 x 660 mm)	35 sq. ft (3.3 m ²)
24 x 24 x 30" - 8 Pocket (610 x 610 x 762 mm)	80 sq. ft (7.4 m ²)
12 x 24 x 30" - 4 Pocket (305 x 610 x 762 mm)	40 sq. ft (3.7 m ²)
24 x 24 x 36" - 8 Pocket (610 x 610 x 914 mm)	96 sq. ft (8.9 m ²)
12 x 24 x 36" - 4 Pocket (305 x 610 x 914 mm)	48 sq. ft (4.5 m ²)

Meets ANSI/UL-900 requirements

Tri-Dim Filter Corporation is committed to continual product development - all descriptions, specifications and performance data are subject to change without notice. Tri-Dim products are manufactured to exacting criteria - there can be a ±5% variance in filter performance.

LOCAL REPRESENTATIVE