

# Tri-Sorb™ R

## High Efficiency

## Molecular Filtration

### FEATURES

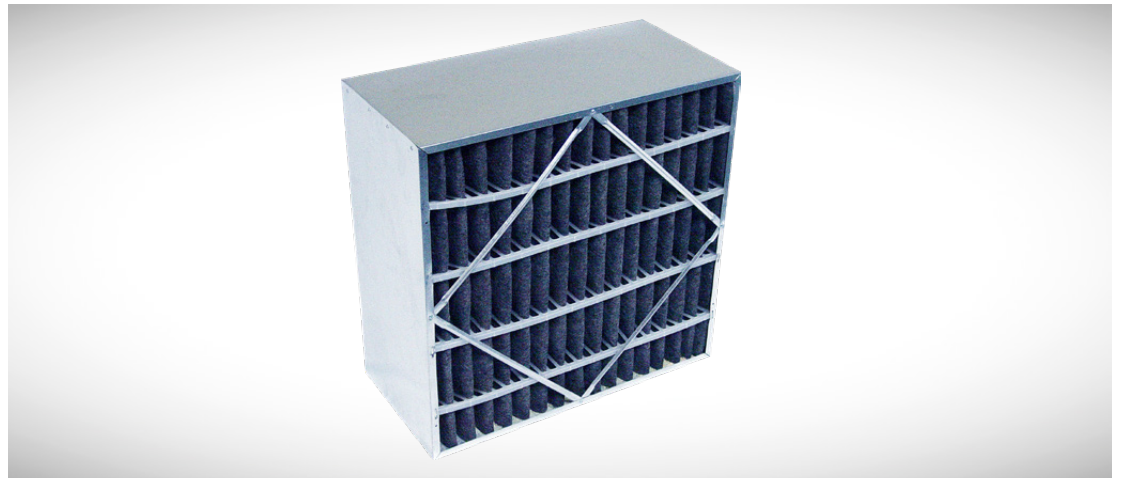
- Easy retrofit
- Low static pressure
- Particulate and gaseous filtration
- Granular activated carbon
- Uniform carbon distribution
- Available with and without a header
- Available in 50/50 blend
- High first-pass efficiency
- Long service life
- Reduced shedding

### APPLICATIONS

- Commercial
- Healthcare
- Industrial plants
- Laboratories
- Institutional
- Governmental
- Microelectronics
- IAQ problems



Granulated activated carbon  
and impregnated alumina blend



### EXTENDED SURFACE SELF SUPPORTED RIGID BOX FILTER

Scientific studies show that Indoor Air Quality is among the Top 5 environmental problems in the world. Most people spend 90% of their time indoors and indoor air contains 2 to 5 times more harmful pollutants when compared to outdoor air. Synthetic materials and cleaning solutions can raise the level of indoor air pollutants to over 100 times outside levels – thus the need for Tri-Dim's Tri-Sorb R.

Tri-Sorb R offers both molecular and particulate filtration and offers easy retrofit into existing systems. Tri-Sorb R is offered in both a metal no header version and a metal single header version – this allows for easy interchange with current filters without the costly retrofit of HVAC system.

The Tri-Sorb R filter utilizes the CarbonWeb® media that allows for uniform distribution of the granular activated carbon. This combined with the high

activity of the carbon and the high carbon loading, 7 lbs (3.2 kg) per 24 x 24 x 12" (610 x 610 x 305 mm) filter, allows for unparalleled 'First Pass' efficiency on a broad spectrum of Airborne Molecular Contamination (AMC).

The extended surface of the Tri-Sorb R allows for a long service life and low resistance. Tri-Sorb R also features a low initial resistance – 0.43 "W.G. (107 Pa), which enhances the ability to easily retrofit with other filtration products. In addition, the low resistance leads to energy savings.

Tri-Sorb R is also available with a 50/50 blend of granular activated carbon and impregnated alumina. This blend offers a greater level of effectiveness across a very wide range of Airborne Molecular Contamination (AMC).

# Tri-Sorb™ R

## Technical Data

### NO HEADER VERSION

Nominal Size	Exact Size	Media Area	Initial Resistance		Carbon Weight	Final Resistance
			300 FPM	500 FPM		
<b>24 x 24 x 12"</b> (610 x 610 x 305 mm)	23 $\frac{3}{8}$ x 23 $\frac{3}{8}$ x 11 $\frac{1}{2}$ " (594 x 594 x 292 mm)	58.08 ft <sup>2</sup> (5.40 m <sup>2</sup> )	0.17 "W.G. (42 Pa)	0.43 "W.G. (107 Pa)	7.7 lbs (3.5 kg)	1.5 "W.G. (373 Pa)
<b>20 x 24 x 12"</b> (508 x 610 x 305 mm)	19 $\frac{3}{8}$ x 23 $\frac{3}{8}$ x 11 $\frac{1}{2}$ " (492 x 594 x 292 mm)	47.83 ft <sup>2</sup> (4.44 m <sup>2</sup> )	0.17 "W.G. (42 Pa)	0.43 "W.G. (107 Pa)	6.2 lbs (2.8 kg)	1.5 "W.G. (373 Pa)
<b>20 x 20 x 12"</b> (508 x 508 x 305 mm)	19 $\frac{3}{8}$ x 19 $\frac{3}{8}$ x 11 $\frac{1}{2}$ " (492 x 492 x 292 mm)	39.88 ft <sup>2</sup> (3.70 m <sup>2</sup> )	0.17 "W.G. (42 Pa)	0.43 "W.G. (107 Pa)	5.1 lbs (2.3 kg)	1.5 "W.G. (373 Pa)
<b>12 x 24 x 12"</b> (305 x 610 x 305 mm)	11 $\frac{3}{8}$ x 23 $\frac{3}{8}$ x 11 $\frac{1}{2}$ " (289 x 594 x 292 mm)	28.70 ft <sup>2</sup> (2.67 m <sup>2</sup> )	0.17 "W.G. (42 Pa)	0.43 "W.G. (107 Pa)	3.8 lbs (1.7 kg)	1.5 "W.G. (373 Pa)

### SINGLE HEADER VERSION

Nominal Size	Exact Size	Media Area	Initial Resistance		Carbon Weight	Final Resistance
			300 FPM	500 FPM		
<b>24 x 24 x 12"</b> (610 x 610 x 305 mm)	23 $\frac{3}{8}$ x 23 $\frac{3}{8}$ x 11 $\frac{1}{2}$ " (594 x 594 x 292 mm)	55.66 ft <sup>2</sup> (5.17 m <sup>2</sup> )	0.17 "W.G. (42 Pa)	0.43 "W.G. (107 Pa)	7.4 lbs (3.4 kg)	1.5 "W.G. (373 Pa)
<b>20 x 24 x 12"</b> (508 x 610 x 305 mm)	19 $\frac{3}{8}$ x 23 $\frac{3}{8}$ x 11 $\frac{1}{2}$ " (492 x 594 x 292 mm)	47.83 ft <sup>2</sup> (4.44 m <sup>2</sup> )	0.17 "W.G. (42 Pa)	0.43 "W.G. (107 Pa)	6.2 lbs (2.8 kg)	1.5 "W.G. (373 Pa)
<b>20 x 20 x 12"</b> (508 x 508 x 305 mm)	19 $\frac{3}{8}$ x 19 $\frac{3}{8}$ x 11 $\frac{1}{2}$ " (492 x 492 x 292 mm)	39.86 ft <sup>2</sup> (3.70 m <sup>2</sup> )	0.17 "W.G. (42 Pa)	0.43 "W.G. (107 Pa)	5.1 lbs (2.3 kg)	1.5 "W.G. (373 Pa)
<b>12 x 24 x 12"</b> (305 x 610 x 305 mm)	11 $\frac{3}{8}$ x 23 $\frac{3}{8}$ x 11 $\frac{1}{2}$ " (289 x 594 x 292 mm)	28.70 ft <sup>2</sup> (2.67 m <sup>2</sup> )	0.17 "W.G. (42 Pa)	0.43 "W.G. (107 Pa)	3.5 lbs (1.6 kg)	1.5 "W.G. (373 Pa)

Tri-Dim Filter Corporation is committed to continual product development – all descriptions, specifications and performance data are subject to change without notice. Tri-Dim products are manufactured to exacting criteria – there can be a ±5% variance in filter performance.

### LOCAL REPRESENTATIVE