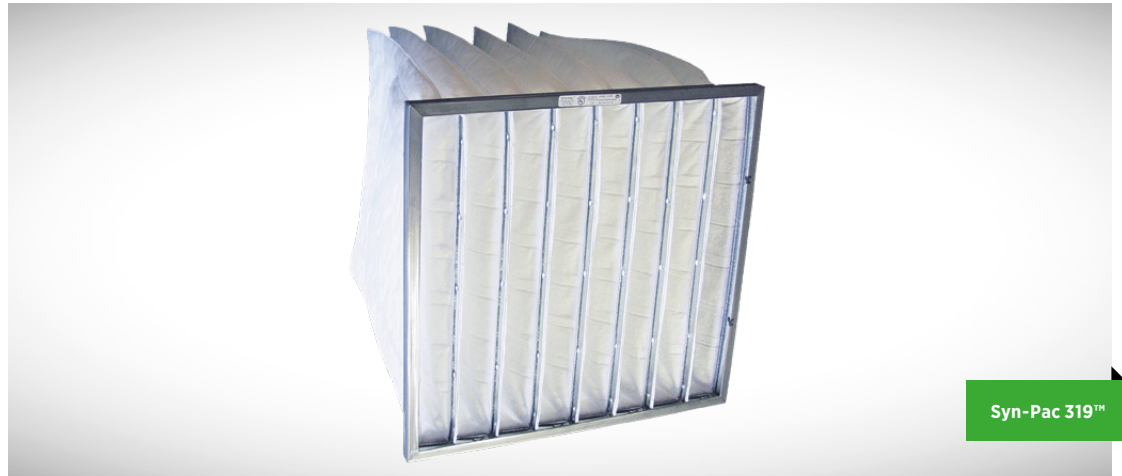


# Syn-Pac 319™

## 3-Stage Aerospace

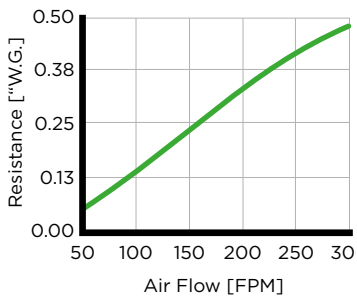
### FEATURES

- Approved for use in 319 3-stage Chromate Paint Systems
- Quality-controlled manufacturing facility
- Initial efficiency on chromate paint 99.93%
- Available in a wide range of standard and special sizes
- Initial resistance of 0.17" W.G. @ 120 FPM



### INITIAL RESISTANCE

vs. Air Flow



### SPRAY-BOOTH SERIES

Tri-Dim's Syn-Pac 319 filters are designed for use in paint booth exhaust systems—specifically NESHAP Chromate Paint Booths. They have been approved for use in 3-Stage NESHAP booths by passing the rigorous 319 Test Method—see test results on page two.

The Syn-Pac 319 filters are manufactured in a quality-controlled manufacturing facility ensuring the highest product quality, and are available in a wide range of standard and special sizes.

Syn-Pac 319 is a synthetic bag filter featuring low initial resistance and high removal efficiencies (MERV 15 per ASHRAE 52.2), and 99.93% initial efficiency on Chromate Paint. The Syn-Pac 319 also offers an extended service life capturing 1107 grams of paint—equal to almost 2.5 lbs.

### TECHNICAL SPECIFICATIONS

<b>Media</b>	Synthetic
<b>Resistance to air flow</b>	0.17 \"W.G. @ 120 FPM (42 Pa @ 0.61 m/s)
<b>Final resistance</b>	1.5 \"W.G. (373 Pa)
<b>ASHRAE 52.2 efficiency</b>	MERV 15 @ 500 FPM
<b>Arrestance on Chromate Paint for 3-Stage System</b>	Initial - 99.93% Average - 99.97%

# Syn-Pac 319™ Specifications

## TEST AEROSOL: OLEIC ACID, NEUTRALIZED

Size Range (µm)	Fractional Efficiency (%)			
	1	2	3	Avg.
0.31 - 0.37	85.2	87.3	86.4	86.3
<b>0.37 - 0.47</b>	<b>87.8</b>	<b>89.6</b>	<b>88.7</b>	<b>88.7</b>
0.47 - 0.56	91.3	91.8	91.7	91.6
0.56 - 0.75	93.7	95	94.2	94.3
0.75 - 0.94	95.6	96.3	95.8	95.9
<b>0.94 - 1.41</b>	<b>96.9</b>	<b>97.5</b>	<b>97</b>	<b>97.1</b>
1.41 - 1.88	98.3	98.6	98.2	98.4
<b>1.88 - 2.83</b>	<b>99.4</b>	<b>99.3</b>	<b>99.2</b>	<b>99.3</b>
2.83 - 3.69	99.8	99.7	99.7	99.7
3.69 - 4.71	99.9	99.9	99.8	99.9
4.71 - 5.11	100	100	100	100
5.11 - 6.29	100	100	100	100
6.29 - 9.43	100	100	100	100

Min.  
> 65%

> 80%

> 95%

## TEST AEROSOL: KCL, NEUTRALIZED

Size Range (µm)	Fractional Efficiency (%)			
	1	2	3	Avg.
0.49 - 0.59	94.2	95	93.8	94.3
<b>0.59 - 0.73</b>	<b>96.1</b>	<b>96.6</b>	<b>95.6</b>	<b>96.1</b>
0.73 - 0.87	97.4	97.8	97.2	97.5
<b>0.87 - 1.16</b>	<b>98.7</b>	<b>98.8</b>	<b>98.2</b>	<b>98.6</b>
1.16 - 1.44	98.9	99.1	98.5	98.8
1.44 - 2.14	99.2	99.3	98.9	99.1
<b>2.14 - 2.85</b>	<b>99.4</b>	<b>99.5</b>	<b>99.2</b>	<b>99.4</b>
2.85 - 4.25	99.7	99.7	99.5	99.6
4.25 - 5.55	99.9	99.8	99.7	99.8
5.55 - 7.07	99.9	99.9	99.9	99.9
7.07 - 7.66	100	99.9	99.9	99.9
7.66 - 9.46	100	100	100	100
9.46 - 14.1	100	100	100	100

Min.  
> 75%

> 85%

> 95%

Tri-Dim Filter Corporation is committed to continual product development - all descriptions, specifications and performance data are subject to change without notice. Tri-Dim products are manufactured to exacting criteria - there can be a ±5% variance in filter performance.

### LOCAL REPRESENTATIVE